



Hand Crank Hose Reel



WJ85.402.050

User Manual





GENERAL SAFETY REGULATIONS



WARNING: The warnings, cautions, and instructions discussed in this instruction manual cannot cover all possible conditions or situations that could occur. It must be understood by the operator that common sense and caution are factors that cannot be built into this product, but must be supplied by the operator.

1. Keep the work area clean and dry. Damp or wet work areas can result in injury.
2. Keep children away from work area. Do not allow children to handle this product.
3. Use the right tool for the job. Do not attempt to force small equipment to do the work of larger industrial equipment. There are certain applications for which this equipment was designed. It will do the job better and more safely at the capacity for which it was intended. Do not modify this equipment, and do not use this equipment for a purpose for which it was not intended.
4. Check for damaged parts. Before using this product, carefully check that it will operate properly and perform its intended function. Check for damaged parts and any other conditions that may affect the operation of this product. Replace damaged or worn parts immediately.
5. Do not overreach. Keep proper footing and balance at all times to prevent tripping, falling, back injury, etc.
6. DO NOT use the equipment when tired or under the influence of drugs, alcohol, or medication. A moment of inattention while operating this equipment may result in serious personal injury.

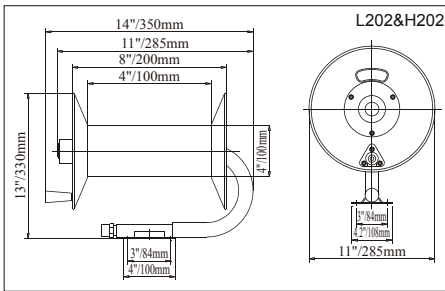
WARNING

1. Read carefully and understand the manual of the pressure washer that you will be using with this hose reel and follow all the safety concerns and warnings in the pressure washer manual.
2. Read carefully and understand all assembly and operation instructions before operating. Failure to follow the safety rules and other basic safety precautions may result in serious personal injury.
3. Never modify any part of the hose reel and replace damaged or worn parts immediately otherwise further damage or injury may occur.
4. Never exceed the maximum ratings of the hose reel or the hose that has been used with it.

TECHNICAL DETAILS

| | |
|---------------------|------------|
| Max Hose Diameter** | 3/8" |
| Max Hose Length** | 50' |
| Max PSI** | 4000 |
| Max Temp** | 78°C/160°F |
| Inlet Size** | 3/8" |
| Outlet Size** | 3/8" |

****Hose not included****



Read the following precautions and instructions before you begin assembly or using. Keep this literature in a dry place for future reference.

ASSEMBLY

This hose reel will come mostly preassembled. The only part that will need to be added is the cranking handle. The cranking handle will be packaged separately and will include all the mounting hardware. The alignment of the holes is designed to allow it to be mounted only one way on the outside of the hose reel. Use a PHILLIPS screwdriver and a wrench to secure tightly.

Mounting it to your pressure washer

Note: You must purchase extra hardware and hose to mount this hose reel.

1. The unit will have a mounting bracket with four predrilled holes. This will allow it to be mounted on any flat surface that can support its weight.
2. Depending on your pressure washer design, it may also mount directly on the upper frame plate. You may need to remove decals and/or drill holes to match up to the pattern of the hose reel.
3. Use nuts and bolts (not included) to attach the hose reel to where it is being mounted.
4. The 3/8" MNPT brass fitting at the bottom of the hose reel is the inlet. Connect this fitting to your pressure washer pump. (You may need to purchase fittings and an extra hose.)
5. The hose reel can accommodate up to a 3/8" x 50' hose (sold separately). Thread one end of the hose from the inside of the hose reel, through the slot, and then to the brass swivel fitting. Use Teflon tape to secure the fitting and help prevent leaking.
6. Use the provided hose clamp to secure the hose going from the fitting through the slot. It is strongly recommended to give the hose some slack to minimize stresses on the fitting from the angles.
7. Wrap up the hose in the hose reel.

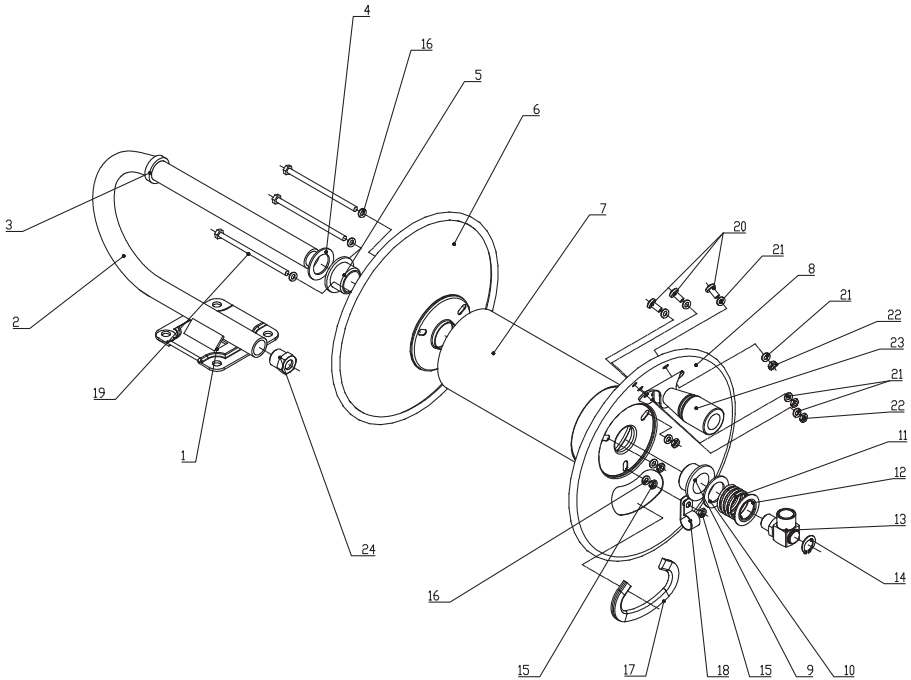
TROUBLESHOOTING

| Problem(s) | Possible Cause | Corrective Action |
|---|---|---|
| Leaking water | a) Fittings need to be sealed with teflon tape. b) Hose has burst. | a) Identify fittings, tape threads with teflon tape. b) Replace hose. |
| Water leaking through swivel | a) Fittings need to be sealed with teflon tape. b) Too much tension on swivel. | a) Identify fittings, tape threads with teflon tape. b) Replumb so that there is more slack on the hose that is connected to it. |
| Swivel assembly not moving freely (locking up). | Inlet hose is not flexible causing side force on swivel. | Properly tighten inlet hose. Hand tighten fitting, plus another half turn with wrench. |

WARRANTY

This hose reel unit has a three months limited warranty. This warranty covers manufacturer defects only and does not extend to any damage caused by the user. It also does not extend to any wear and tear caused by regular use of the product.

EXPLODED AND PARTS LIST



| Part No. | Description | Q'ty | Part No. | Description | Q'ty |
|----------|---|------|----------|---------------------------------------|------|
| 1 | Base(welded with stand) | 1 | 13 | Swivel (including 2 valve & 2 O-ring) | 1 |
| 2 | Stand(steel pipe covered with foam protector) | 1 | 14 | Spring wahser | 1 |
| 3 | Fixed washer (welded on stand) | 1 | 15 | Nut | 3 |
| 4 | Washer | 1 | 16 | Washer | 3 |
| 5 | Positon sleeve | 1 | 17 | Protector (rubber) | 1 |
| 6 | Flange A | 1 | 18 | Clamp | 1 |
| 7 | Sleeve | 1 | 19 | Screw | 3 |
| 8 | Flange B | 1 | 20 | Screw | 3 |
| 9 | Position sleeve | 1 | 21 | Washer | 3 |
| 10 | Washer | 1 | 22 | Nut | 3 |
| 11 | Spring | 1 | 23 | Handle | 1 |
| 12 | Washer | 1 | 24 | Valve | 1 |

wetjet™

If you need assistance with the assembly
operation of your Hand Crank Hose Reel please call

1-866-850-6662

 **WETJETPOWER.COM**